



**UNU
FLORES**

Spotlight on Lusatia

**A German lignite mining
area between just
transition and a pilot
region**

Franziska Stölzel
Research Associate
in Weißwasser



Agenda

01

Lusatia

Key facts

02

Future vision

From the region

03

Just Transition

Aspects of stakeholders

04

Pilot region

Possibilities for
other regions

05

Conclusion



1. Lusatia - Key facts

- Located in 2 German states
- Brandenburg (Lower Lusatia) and Saxony (Upper Lusatia)
- Seven districts
- parts in Poland
- 11.727km²
- 1.138.626 Citizen (31.12.2021)

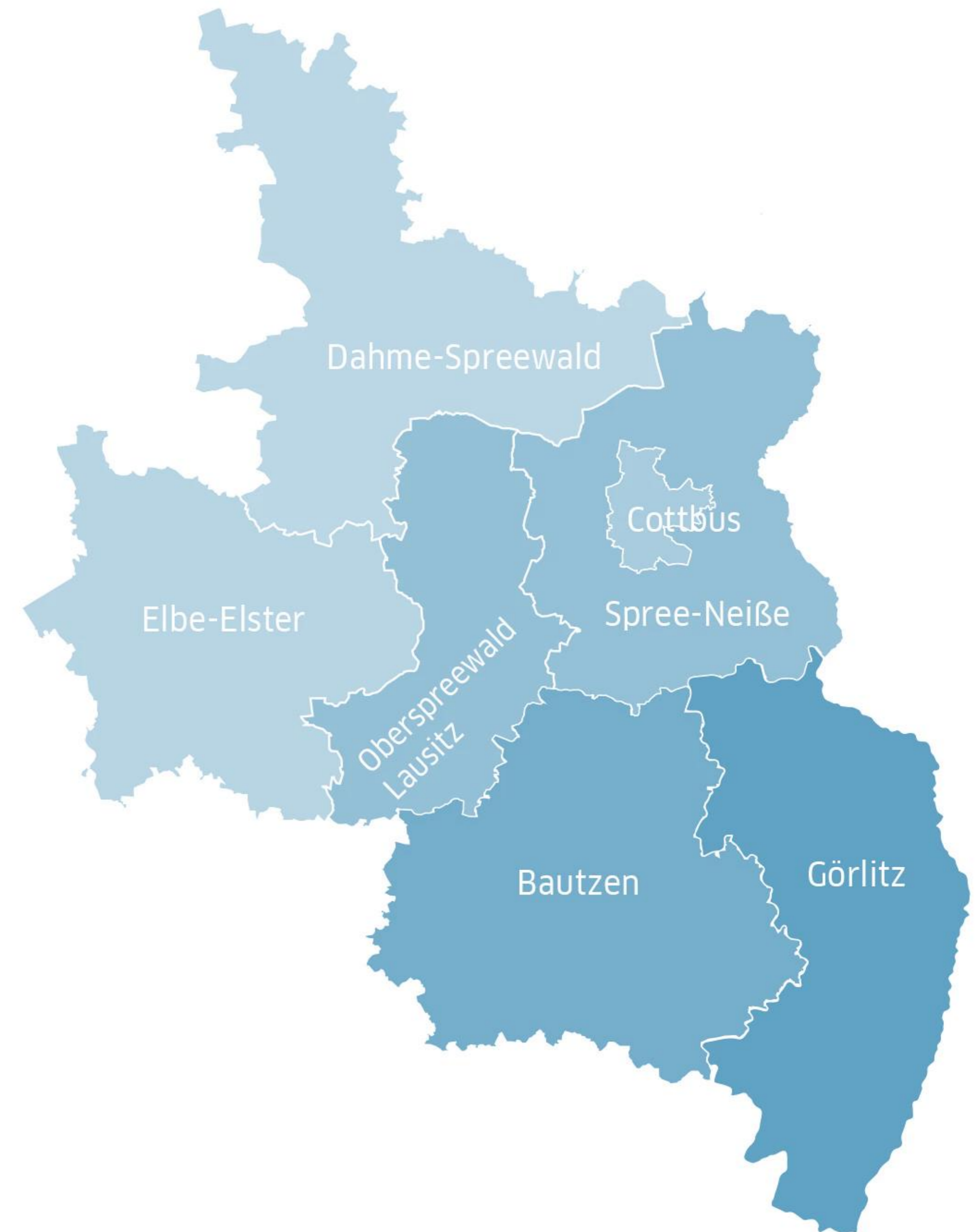


1. Lusatia - Key facts

- Located in 2 German states
- Brandenburg (Lower Lusatia) and Saxony (Upper Lusatia)
- Seven districts
- parts in Poland
- 11.727km²
- 1.138.626 Citizen (31.12.2021)

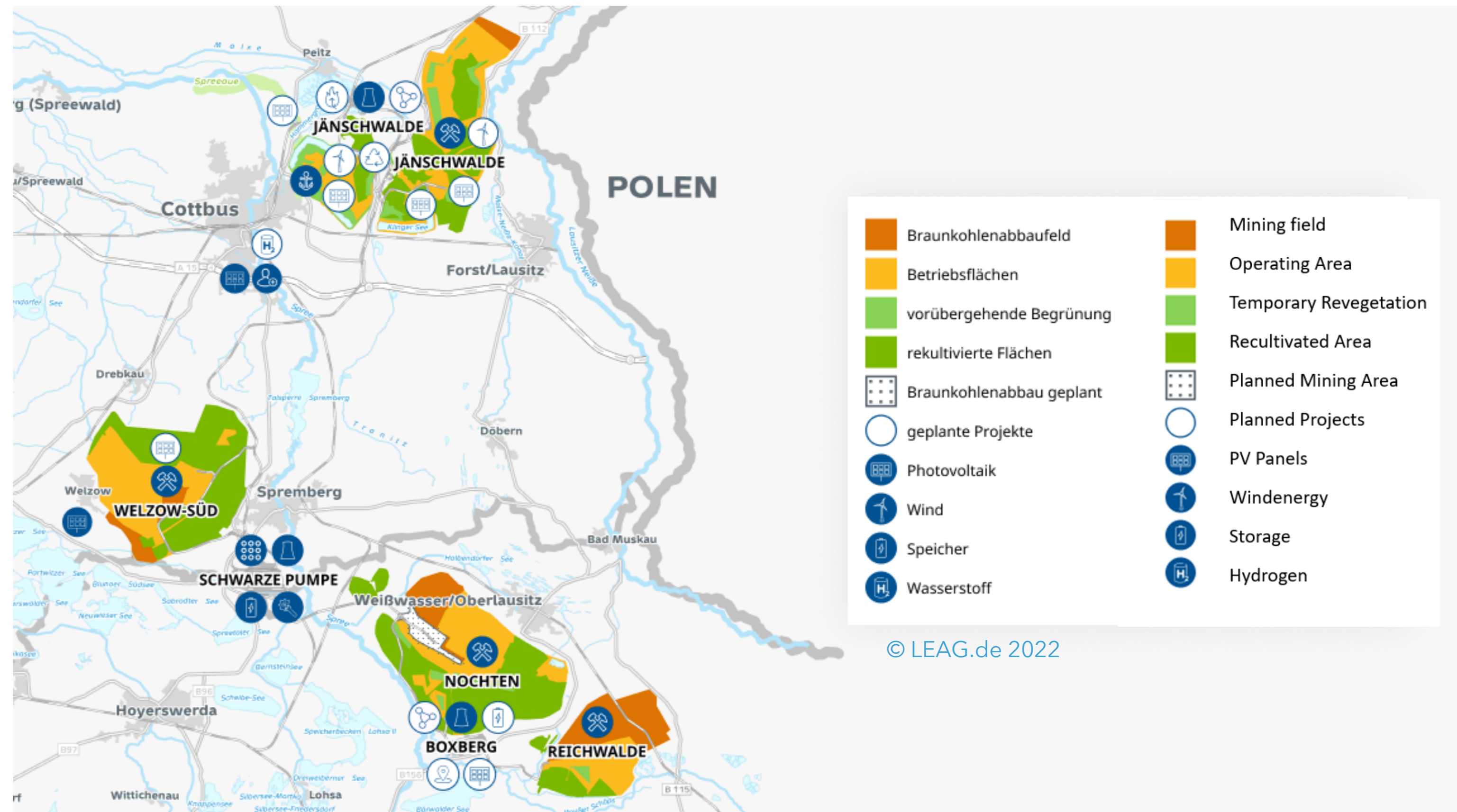
- First lignite mining by hand 1789
- Open pit mining 1890

- Commission for growth, structural change and employment:
 - Latest phase out by 2038
 - 40 Billion €



Mining Area

- Coal mining and power company:
LEAG *Lausitzer Energie Bergbau AG*
- 7000 employees
- 45 TWh Energy in 2021
- 48,5 Mio t lignite dredged in 2022



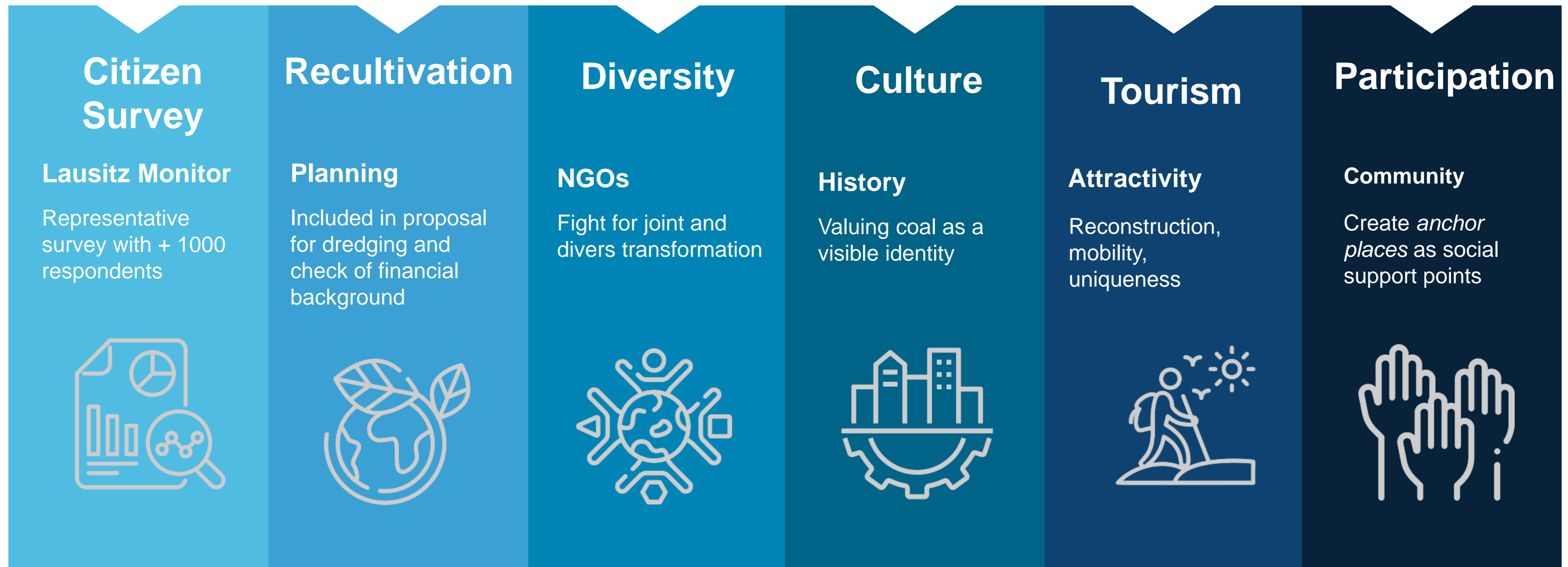
2. Future: The visions for the region (by local stakeholders)



3. Just Transition (conclusions REBOOST project)



4. Pilot region .. (presentation and discussion @ Überlandfestival Görlitz 2022)



5. Conclusion

- Phase out by 2038 to late for Paris Agreement
- Less coal mining in Germany » more coal import from Global South
- Sustainable energy only effective with acceptance
- Stable energy supply
- EU wide regulations
- Networking and exchanges helpful
- Planned and structured phase out is applicable
- Integration of social dimensions of transition needed





Thank you for your attention



Franziska Stölzel



stoelzel@unu.edu



franzistoelzel



+49 172 8339359